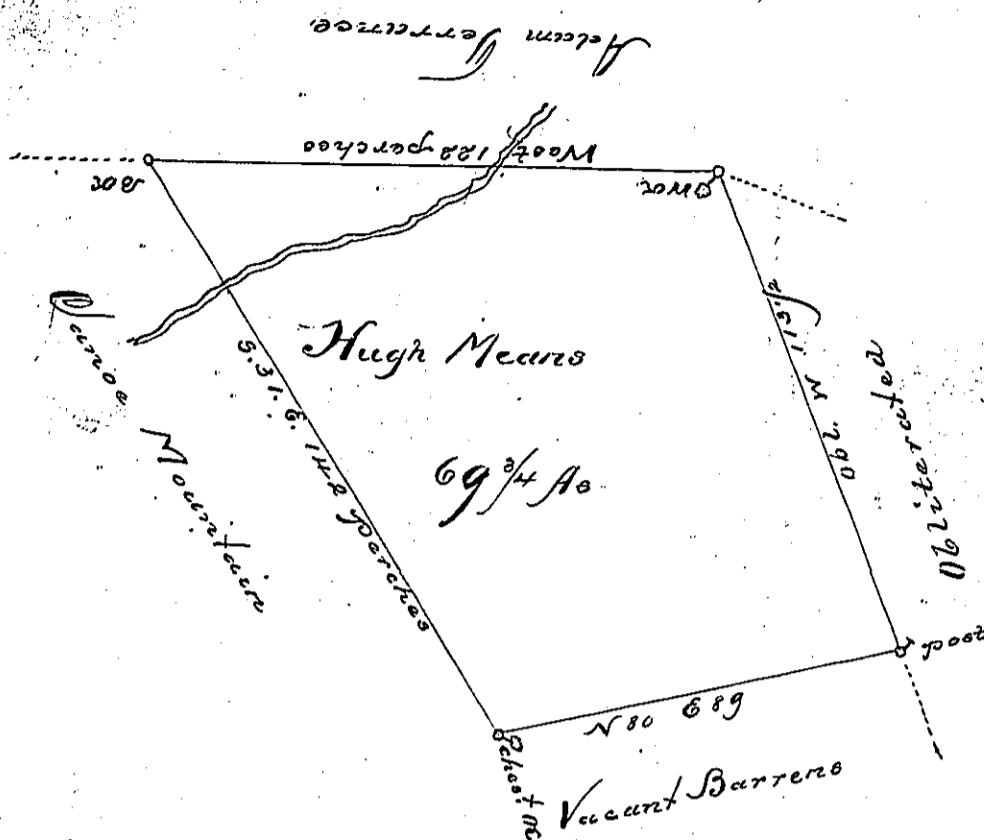


A-76-218



Draught of a Tract of Land called the Addition at the East end of the
 Canoe Mountain adjoining other (obliterated) Hugh Means in right of Adam
 Ferrance and adjoining (obliterated) the Proprietaries Little Juniata Manor in-
 cluding a Lick (obliterated) Township in the County of Bedford Containing
 (obliterated) Acres & three quarters of an Acre & the usual (obliterated)
 six p Cent for Roads &c. Surveyed the 22^d Day October 1775 for
 Hugh Means by virtue of a Warrant (obliterated) 7th Day of October 1773. by
 Thomas Smith D.S.

(obliterated) Lukens Esq
 (obliterated) General

IN TESTIMONY that the above is a copy of the original remaining on file in the
 Department of Internal Affairs of Pennsylvania, made con-
 formably to an Act of Assembly approved the 16th day of
 February, 1833, I have hereunto set my Hand and caused
 the Seal of said Department to be affixed at Harrisburg, this
 second day of February 1897

James W. Patton
 Secretary of Internal Affairs.